

# KEIP - Kentucky Election Integrity Process



Keeping accurate voter rolls for the Commonwealth of Kentucky

## SBE Voter List Maintenance

As the independent agency statutorily charged with supervising registration and purgation of voters within the state, the Kentucky State Board of Elections (SBE) is committed to maintaining the integrity of the Commonwealth's list of registered voters. Our approach is to obtain the best data available and to use that data regularly. Although the data used to match a voter record comes from multiple reliable sources, there are only three possible outcomes:

- 1) A voter's information is updated in the Voter Registration System (VRS), maintained by SBE;
- 2) A voter is removed from VRS immediately;
- 3) A voter enters the removal process as set forth in the National Voter Registration Act (NVRA).

### Internal Processes Leading Directly to Purgation

#### REMOVAL UPON DEATH

SBE removes deceased voters after notification of their passing from the following:

- 1) Weekly death file from KY Vital Statistics;
- 2) Yearly Social Security Death Index from ERIC;
- 3) Deceased Reports from counties as received.

#### REMOVAL UPON FELONY CONVICTION

SBE processes a Felon File from the Administrative Office of the Courts (Weekly)

#### REMOVAL AFTER MOVE OUT OF STATE

Registration Cancellation Notices are received and processed from other states (Weekly)

#### OVER AGE 105 VERIFICATION

SBE runs a report for each county of all voters over 105 years old for county validation (Yearly)

#### CANCELLATION AT VOTER REQUEST

After contacting SBE, voters can cancel their registration online in a secure portal (As received)

#### REMOVAL FOLLOWING JUDICIAL DECLARATION OF MENTAL INCOMPETENCY

Mental Incompetent forms submitted from local Circuit Clerk offices (Daily or as received)

### National Voter Registration Act (NVRA) Processes to Identify Inactive Voters

This is the other aspect of List Maintenance, it is a continuous process that entails the mailing of thousands of voter notifications yearly. For the details of the NVRA removal process, [please see the other side of this sheet.](#)

# National Voter Registration Act (NVRA) Process to Identify Inactive Voters

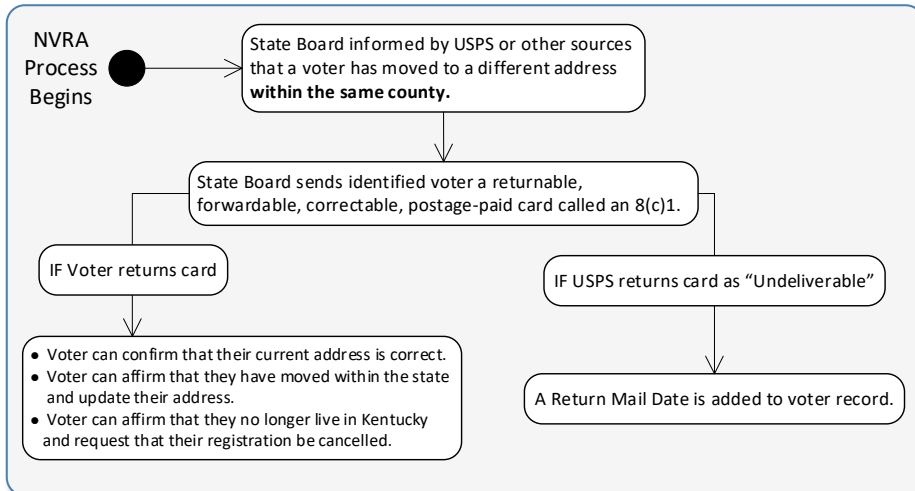
Under the federal National Voter Registration Act, states are required to “conduct a general program that makes a reasonable effort to remove the names of ineligible voters from the official lists of eligible voters.” At least once a year, SBE receives a report showing Kentucky voters who have likely moved and need to have their information updated. This report comes from the National Change of Address (NCOA) data, provided by the United States Postal Service. A returnable, forwardable, correctable, postage-paid card is sent to these thousands of voters in order to give them every opportunity to:

- Confirm that they have not moved.
- Confirm that they have moved within Kentucky and provide SBE with the new address.
- Confirm that they have moved out of state.

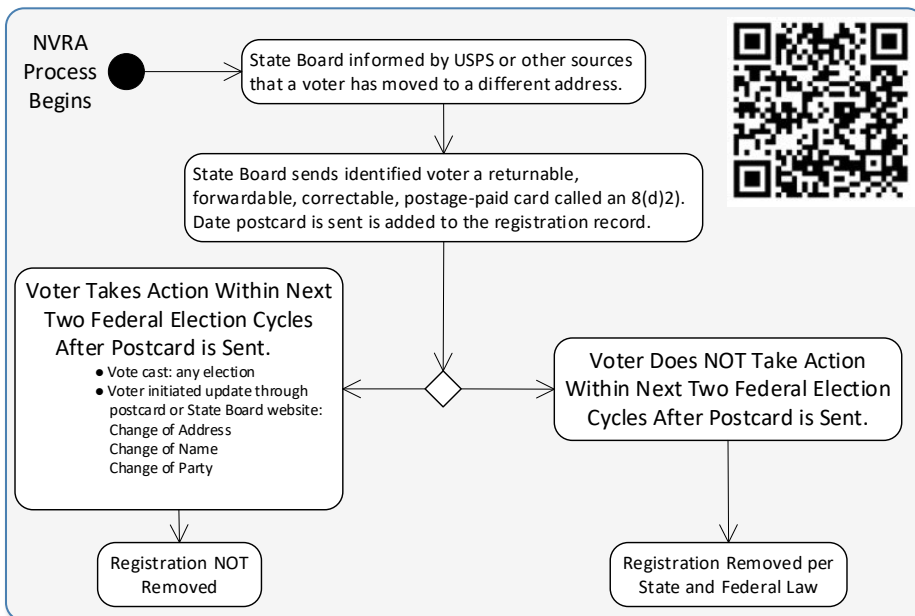
There are two types of cards which must be sent, the 8(c)1, which is sent to those who have moved within the same county, and the 8(d)2, which is sent to all others. The process for both of those types of cards is further explained below.

If SBE receives no reply from these mailings, then the voter enters the NVRA “Inactive” status, which may end in the voter being properly removed from the Kentucky voter registration database.

## Basic NVRA Voter Lifecycle 8(c)1



## Basic NVRA Voter Lifecycle 8(d)2



## NVRA Postcard Mailings

No registration is removed solely for a failure to vote. A voter must be proven to have been inactive over the course of at least two federal elections.

### 8(c)1 Process

If SBE receives no reply from an in-county mover mailing, then the voter record will be appended with a “return mail date” which allows SBE to add this voter to the next mailing as an 8(d)2.

### 8(d)2 Process

If SBE receives no reply from an out-of-county or out-of-state mover mailing, then the voter enters the NVRA “Inactive” status, which may end in the voter being properly removed from the KY voter registration database.

### ERIC Data

SBE receives multiple reports yearly from the Electronic Registration Information Center (ERIC), which is used primarily for the NVRA process. However, the SSN Death Index leads directly to a purge due to death.

- In-state Duplicates (Yearly)
- In-state Updates, KY DMV data (Yearly)
- National Change of Address (Yearly)
- Cross-state Matches (Yearly)
- Social Security Death Index (Yearly)